

A rare opportunity to
experience luxurious serviced
living in West Vancouver







An undeniably special place for a select few to call home

Gracefully perched at the entrance to Park Royal, Executive on the Park is a distinctively rare living experience. Enveloped by the softness of nature, these one-of-a-kind one to three-bedroom homes combine luxury and hospitality, with high-end à la carte services, sophisticated design, and unwavering quality. Bordered by the sea and mountains, and with a reputation for both prestige and charm, West Vancouver is the Lower Mainland's most coveted community to call home. Life is meaningful, connected, and refined at Executive on the Park — a residential opportunity that rarely arises.



WALKABLE LIFESTYLE
PARK ROYAL



PEACEFUL SCENES
AMBLESIDE BEACH



ICONIC NATURE
STANLEY PARK



A diverse and fulfilling lifestyle beyond compare

Quiet walks by the river or ocean, limitless convenience, picturesque beach days, inspired shopping and dining, meditative forest bathing, friendly villages, and more. West Vancouver offers an abundant lifestyle that caters to every whim. Executive on the Park, located at the community's entrance, is connected to it all. Klahanie Park on the Capilano River is a peaceful green oasis next door to home, the meandering seawall is accessible only a few minutes from your front door, and Park Royal shopping centre is directly across the street. You live at the centre of a lifestyle like no other, where most needs are fulfilled within a short walk from home.



Boundless variety in every direction

With Park Royal so close, a diverse assortment of over 200 upscale and everyday shopping, dining, and entertainment options is at your fingertips, including grocery stores, cinemas, and restaurants.

- LOCAL PARKS

01) AMBLESIDE PARK

02) AMBLESIDE PARK PLAYGROUND

03) MILLENNIUM PARK

04) JOHN LAWSON PARK

05) KLAHANIE PARK

06) CAPILANO SUSPENSION BRIDGE PARK

07) STANLEY PARK

08) PROSPECT POINT LOOKOUT
- LOCAL BEACHES

09) AMBLESIDE BEACH

10) AMBLESIDE PIER

11) WEST VANCOUVER CENTENNIAL SEAWALK

12) DUNDARAVE BEACH
- SHOPPING

13) HUDSON'S BAY

14) PARK ROYAL

15) PARK ROYAL MALL NORTH

16) THE VILLAGE AT PARK ROYAL

17) LONSDALE QUAY
- DINING

18) TRATTORIA PARK ROYAL

19) ANCORA WATERFRONT DINING AND PATIO

20) EARLS KITCHEN + BAR

21) HOLLYBURN COUNTRY CLUB

22) CACTUS CLUB CAFE
- GOLF

23) AMBLESIDE PAR 3

24) MURDO FRAZER PITCH AND PUTT GOLF COURSE

25) CAPILANO GOLF AND COUNTRY CLUB
- RECREATION

26) WEST VANCOUVER CRICKET CLUB

27) COMMUNITY CENTRE

28) AQUATIC CENTRE

29) WEST VANCOUVER TENNIS CLUB

30) CAPILANO TENNIS CLUB

31) NORTH VANCOUVER TENNIS CENTRE

32) WEST VANCOUVER MEMORIAL LIBRARY

33) HOLLYBURN COUNTRY CLUB

34) CINEPLEX CINEMAS PARK ROYAL AND VIP

35) CYPRESS MOUNTAIN RESORT
- TRAILS

36) CAPILANO PACIFIC TRAIL
- SCHOOLS

37) CEDARDALE ELEMENTARY

38) RIDGEVIEW ELEMENTARY

39) WESTCOT ELEMENTARY

40) ÉCOLE PAULINE JOHNSON ELEMENTARY

41) HOLLYBURN ELEMENTARY

42) WEST BAY ELEMENTARY

43) CAPILANO UNIVERSITY

44) WEST VANCOUVER SECONDARY

45) CHARTWELL ELEMENTARY

46) SENTINEL SECONDARY

47) ST. ANTHONY'S

48) BODWELL HIGH SCHOOL
- GROCERY STORES

49) LOBLAWS

50) WHOLE FOODS MARKET

51) OSAKA SUPERMARKET

52) FRESH ST. MARKET

53) WALMART SUPERCENTRE



CLYDE AVENUE

88 architecturally
refined homes
next to Park Royal

HERITAGE
BUILDING
(FUTURE PROPERTY
MANAGEMENT OFFICE)

COURTYARD

PARK ROYAL
PARKADE
(RESERVED FOR
FUTURE DEVELOPMENT)

PLAYGROUND

APARTMENT BUILDING
(EAST SIDE)

CORNER
PARK

APARTMENT BUILDING
(WEST SIDE)

MARINE DRIVE

6TH STREET





A timeless illustration of West Coast Modern

Beautifully designed by dys architecture, Executive on the Park prominently anchors the gateway to West Vancouver. Rising to eight storeys, the building is an expression of West Coast Modern, and is inspired by a restored heritage building on the property by renowned local architect Fred Hollingsworth. The striking rooflines, along with the creative use of wood and glass, on the iconic 1960s-era structure are translated into a modern residential form. Wood paneling, signature soffits, brick masonry, and balanced window mullions combine to create distinguished character, and a timber canopy makes a memorable first impression. The result is a confident form fronting an important entrance — a sight that can't be missed.



Everyday life is influenced by nature

With over half of the property dedicated to greenspace, residents may experience tranquility and wellness at any moment. Lush landscaping and colourful garden beds encircle the building, while an intimate parkette with benches and paths punctuates the corner. A pedestrian mews is a peaceful and verdant front for townhomes, and another park is for the exclusive use of residents, where you can enjoy a moment outdoors with friends, family, or yourself. Nature is an ever-present companion.







Life's possibilities expand
with hotel-style services





Succumb to the lifestyle you deserve, with a selection of services that rivals the offerings of a luxury hotel.

CONCIERGE SERVICES

A welcoming 24/7 concierge is available to assist you with deliveries, guests, and other everyday matters, putting your mind at ease as you move through life.

HOUSEKEEPING SERVICES

Maintain an orderly and clean home with regular housekeeping services, or schedule a housekeeper from time to time, when the need arises.

ON-SITE RESIDENCE MANAGEMENT

Experience the comfort of having a professional residence manager on site to promptly arrange hospitality services, answer any questions, or address any concerns.

FITNESS CENTRE

Enhance your mind and body in a state-of-the-art fitness centre equipped with locker rooms.

RESIDENT LOUNGES

Two lounges, one small and the other large, invite residents to relax or socialize on comfortable seating. With audio visual capabilities, WiFi services, and catering options available, the spaces are ideal for private events.



Luxury flows exquisitely
throughout the homes



Designing a functional and refined culinary focal point

Available in two colour schemes, the kitchen is an unequivocal statement of design. Timeless, modern, and functional, the expansive space is rooted in craftsmanship. Quality cabinetry beautifully contrasts in a combination of textured and matte finishes. Premium quartz countertops cascade from islands in a waterfall effect. And integrated appliances by Fisher & Paykel are superior gourmet tools. Throughout, clever storage solutions ensure food, accessories, and dishware are well organized. Whether you are entertaining friends, enjoying a quiet morning coffee, or preparing a delicious meal with your partner, the kitchen is an inspiring environment.



GOURMET KITCHEN
DESIGNED FOR EVERY OCCASION



FORM MEETS FUNCTION
TAILORED SOPHISTICATION





Retreat to a
stylish sanctuary



Ensuites are designed to evoke serenity. Stunning oversized tiles, accented with a herringbone mosaic, blanket the floors and walls. Custom vanities provide purpose and elegance, with quartz countertops, large drawers, and a mirrored medicine cabinet. Begin your days beneath the stream of a rain shower or slip into the waters of a free-standing tub. Ensuitees connect to a lavish primary bedroom, with custom organizers built into large walk-in closets.







The luxurious comfort of home

The openness of light-filled interiors is a result of thoughtful space planning, over-height ceilings, and intelligent window placement. Sophisticated and durable hardwood flooring sweeps throughout, providing solid ground for everyday life. With plenty of space for separate dining and living areas, there are many ways you can enjoy elevated living.







Limitless versatility indoors and out

As you move through life, priorities and routines change. A flexible den offers you a space that can be transformed into a home office, library, craft room, or anything else that fits with your lifestyle. Smoothly transition living and entertaining to a balcony or terrace, where you may savour fresh air and beautiful views.



Premium features and finishes

RARE WEST VANCOUVER LIVING EXPERIENCE

- Prominently perched on the corner of Marine Drive and Taylor Way — at the gateway to West Vancouver
- 88 one-of-a-kind one to three-bedroom condo and townhome residences
- Across the street from over 200 shopping, dining, and entertainment options at vibrant Park Royal shopping centre
- Direct underpass access to Capilano River and Ambleside Seawalk
- Refined West Coast Modern architecture by dys architecture inspired by a restored heritage building by renowned local architect Fred Hollingsworth
- Designed to be environmentally sustainable, achieving Step 2+ level set by BC Energy Step Code
- Prestigious entry driveway with timber trellis and water feature
- Grand double-height lobby with elegant triple-sided fireplace, multiple seating areas, craftsman millwork, and architectural lighting

LUXURIOUS LIFESTYLE AMENITIES

- Luxurious hotel-style services elevate life to new levels:
 - 24/7 concierge assists with deliveries, guests, and scheduling services
 - Optional housekeeping services maintain a clean home
 - In-suite catering on request to entertainment or intimate celebration
 - On-site general property management for peace of mind
- Fully-equipped fitness centre with state-of-the-art equipment and secured storage area with lockers
- Beautifully landscaped greenspace comprises over half of the property
 - Intimate corner parkette with benches and paths
 - Verdant pedestrian mews fronting townhomes
 - Colourful garden beds throughout
 - Lush residents-only outdoor amenity with lounging and dining areas
- Two lounges, small and large, invite residents to relax or entertain
 - Audio visual capabilities, WiFi services, and catering options available

SOPHISTICATED INTERIORS

- Select from your choice of two beautiful colour schemes
- Premium wide-plank, engineered-oak hardwood flooring flows through living areas and bedrooms
- Airy over-height ceilings
- Large floor-to-ceiling windows for optimal natural light and connection to the outdoors
- Modern roller solar shades for privacy and atmosphere
- Custom walk-in closets for effortless organization in primary bedrooms
- Full-size, high-efficiency, front-loading washer and dryer
- High-efficiency in suite heating and cooling minimizes environmental impact and greenhouse emissions

STATEMENT KITCHENS

- Refined quartz stone with natural veining on countertops, backsplash, and island's waterfall gables
- Contemporary textured and matte wood laminate cabinetry with integrated pulls and soft-close function
- Gourmet Fisher & Paykel integrated appliance package includes:
 - Refrigerator
 - Wall oven
 - Gas cooktop
 - Dishwasher
- AEG pull-out hood fan
- Panasonic inverter microwave with trim kit for a seamless look
- Wine fridge for private wine collections (select homes)
- Intelligent storage solutions, including cutlery organizers, a built-in pantry, and an integrated recycling centre
- Under-cabinet lighting for precision tasks
- Deep undermount stainless steel sinks
- Elegant chrome gooseneck faucet with pull-down jet spray

TRANQUIL ENSUITES

- Oversized 36" x 36" wall and floor tiles with stunning herringbone mosaic accents
- Nuheat heated flooring provides soothing comfort all-year-round
- Elegant custom vanity with quartz countertops, undermount sinks, and large soft-close drawers for convenient storage
- Mirrored medicine cabinet with indirect lighting provides discreet and practical storage
- Frameless glass-enclosed shower with a niche to keep toiletries close
- Rain showerhead and hand-held shower wand offer refreshing variety
- Luxurious free-standing bathtub with free-standing faucet and hand-held shower wand (select homes)
- Sleek one-piece, dual-flush, eco-flow toilets in all bathrooms
- Quality classic contemporary plumbing in polished chrome with matching bathrooms accessories

BATHROOMS

- Oversized wall tiles with elegant soft marble veining
- Marble mosaic for shower floors and frameless glass enclosures in bathrooms with showers
- Some bathrooms with deep soaking alcove tubs and integrated showers
- Elegant custom vanity with quartz countertops, undermount sink, and large soft-close drawers for convenient storage
- Mirrored medicine cabinet with indirect lighting provides discreet and practical storage
- Sleek one-piece toilet and quality classic contemporary plumbing in polished chrome with matching bathrooms accessories

PEACE OF MIND

- Advanced security system, featuring closed circuit cameras, electronic keyless lobby and garage entries, and access controls for each floor
- Bike and storage rooms with motion sensor lighting
- 2-5-10 year comprehensive home warranty protection



A tradition of
excellence continues...



THE EXECUTIVE GROUP

Established in 1984, the Vancouver-based Executive Group of Companies is a diversified real estate construction, development, and management company known for exceptional North American projects that stand the test of time. Proudly Canadian, we maintain our reputation of excellence with quality workmanship and materials, outstanding customer service, and attention to detail. The development of meaningful residential services and amenities is an integral part of our success. While we have developed over 2,500 residences, we also own and operate the Executive Hotels & Resorts premium hotel chain, with hotels located in Canada and the United States. With principals who are long-time residents of West Vancouver, we have strong ties to this community and truly cherish its uniqueness.

www.executivegroupdevelopment.com



All renderings and images are representations only. The developer reserves the right to make changes to any information contained herein and make modifications to specifications, floor plans, features, sizes and measurements without further notice. This is not an offering for sale. Any such offering can only be made by way of a disclosure statement. E & O.E.



EXECUTIVE
ON THE PARK
WEST VANCOUVER

A rare opportunity to
experience luxurious serviced
living in West Vancouver

Succumb to the lifestyle you deserve, with a selection
of services that rivals the offerings of a luxury hotel.

● CONCIERGE SERVICES

A welcoming 24/7 concierge is available to assist you with deliveries, guests, and other everyday matters, putting your mind at ease as you move through life.

● ON-SITE RESIDENCE MANAGEMENT

Experience the comfort of having a professional residence manager on site to promptly arrange hospitality services, answer any questions, or address any concerns.

● FITNESS CENTRE

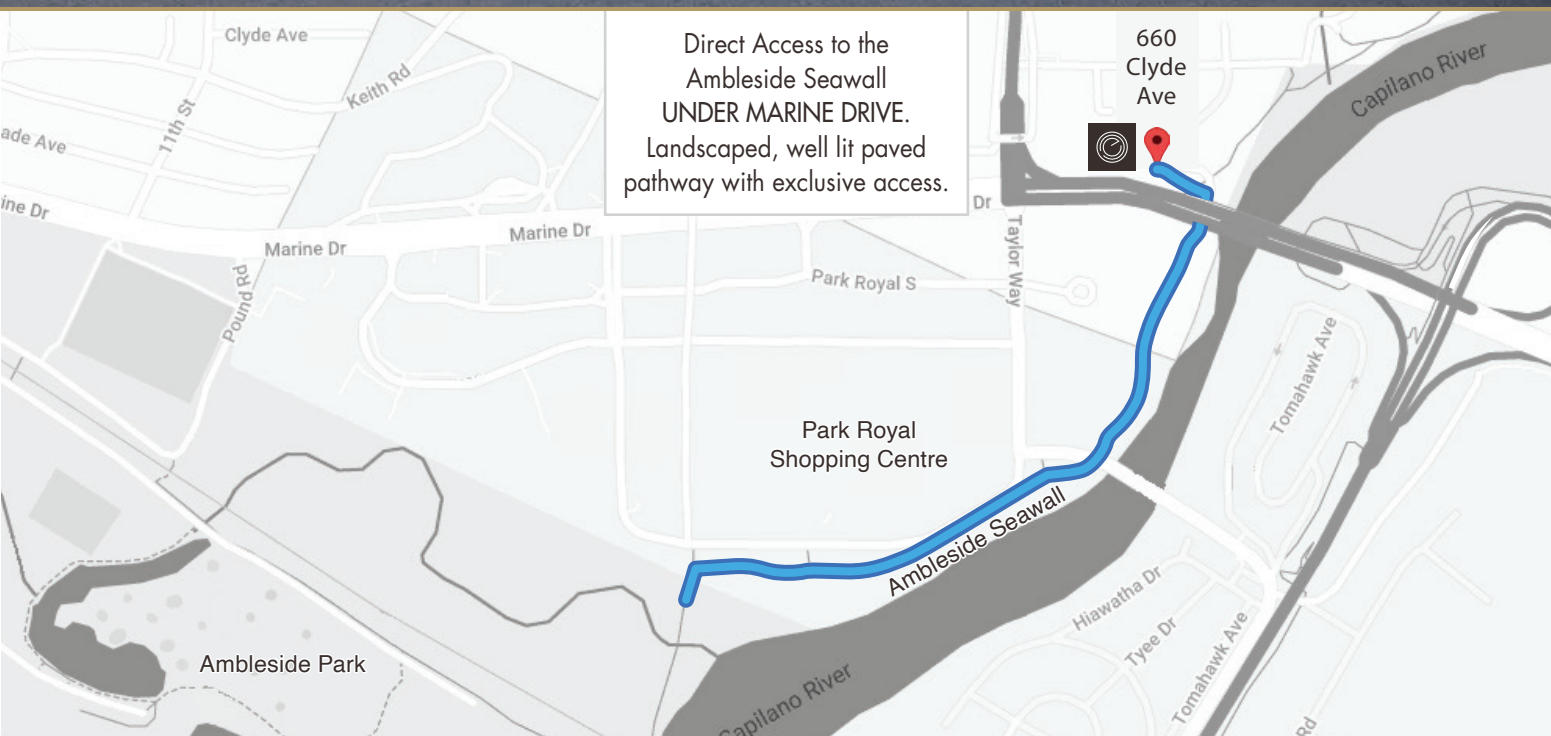
Enhance your mind and body in a state-of-the-art fitness centre equipped with locker rooms.

● HOUSEKEEPING SERVICES

Maintain an orderly and clean home with regular housekeeping services, or schedule a housekeeper from time to time, when the need arises.

● RESIDENT LOUNGES

Two lounges, one small and the other large, invite residents to relax or socialize on comfortable seating. With audio visual capabilities, WiFi services, and catering options available, the spaces are ideal for private events.



Direct Access to the
Ambleside Seawall
UNDER MARINE DRIVE.
Landscaped, well lit paved
pathway with exclusive access.

660
Clyde
Ave

ExecutiveonthePark.com

604.926.2398



— WEST VANCOUVER FEATURES
SOME OF THE TOP RANKED
PUBLIC & PRIVATE SCHOOLS
INCLUDING:

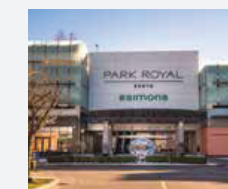
Hollyburn Elementary *(school catchment)
West Vancouver Secondary *(school catchment)
Collingwood
Ridgeview
St Anthony's

— SHOPPING

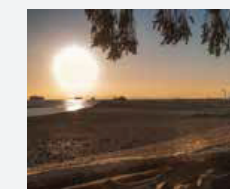
Hudson's Bay
Park Royal
Park Royal Mall North
The Village at Park Royal
Lonsdale Quay
Cineplex Movie Theatre
Ambleside Beach

Boundless variety in every direction

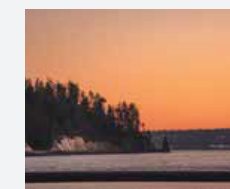
With Park Royal so close, a diverse assortment of over 200 upscale and everyday shopping, dining, and entertainment options is at your fingertips, including grocery stores, cinemas, and restaurants.



WALKABLE LIFESTYLE
PARK ROYAL



PEACEFUL SCENES
AMBLESIDE BEACH



ICONIC NATURE
STANLEY PARK

DOWNTOWN
VANCOUVER
10 MIN

HORSESHOE
BAY FERRIES
23 MIN

YVR
AIRPORT
37 MIN

US/CANADA
BORDER
60 MIN

WHISTLER
VILLAGE
90 MIN

1 BEDROOM COLLECTION



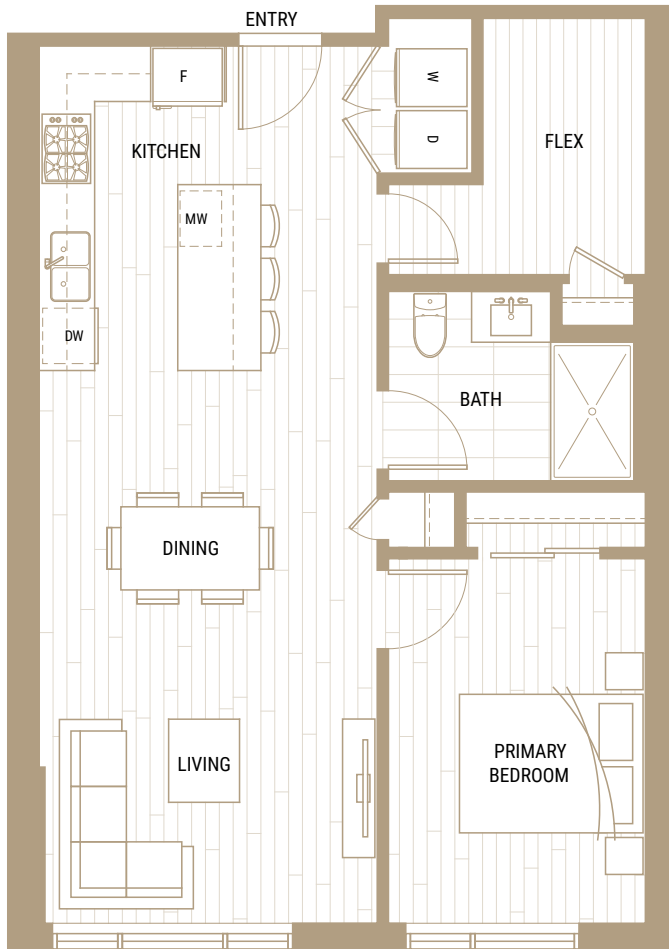
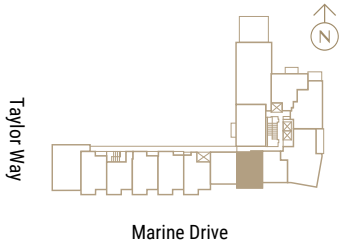
EXECUTIVE
ON THE PARK

WEST VANCOUVER

Plan G

205

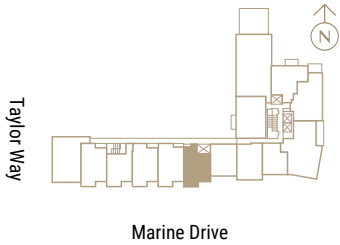
1 BED + FLEX
1 BATH
786 SF. INTERIOR



Plan J

509

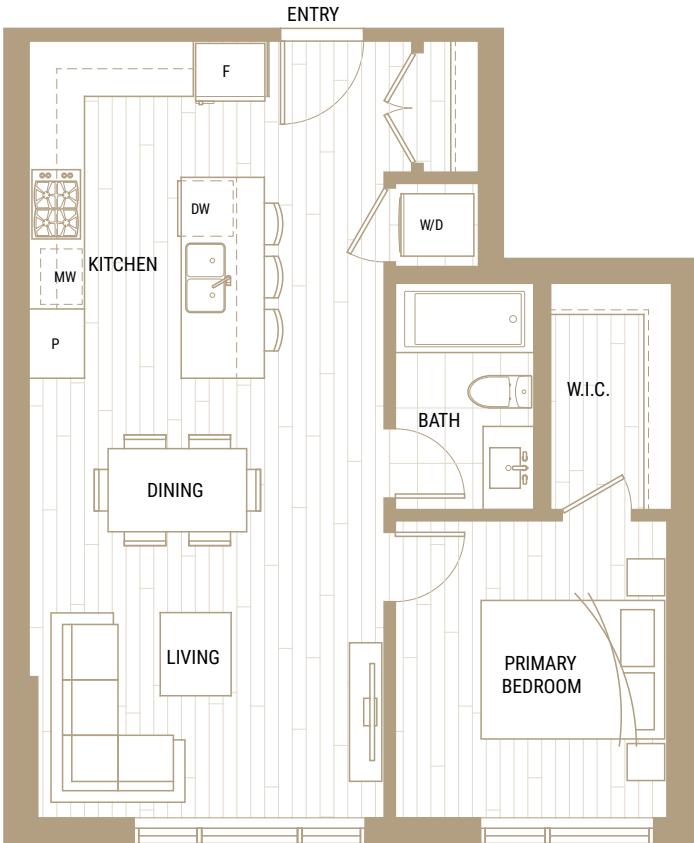
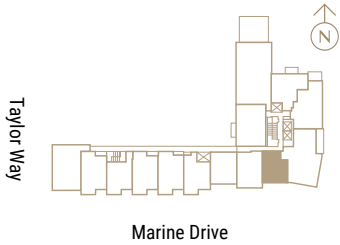
1 BED + FLEX
1 BATH
804 SF. INTERIOR



Plan F

204, 406, 606

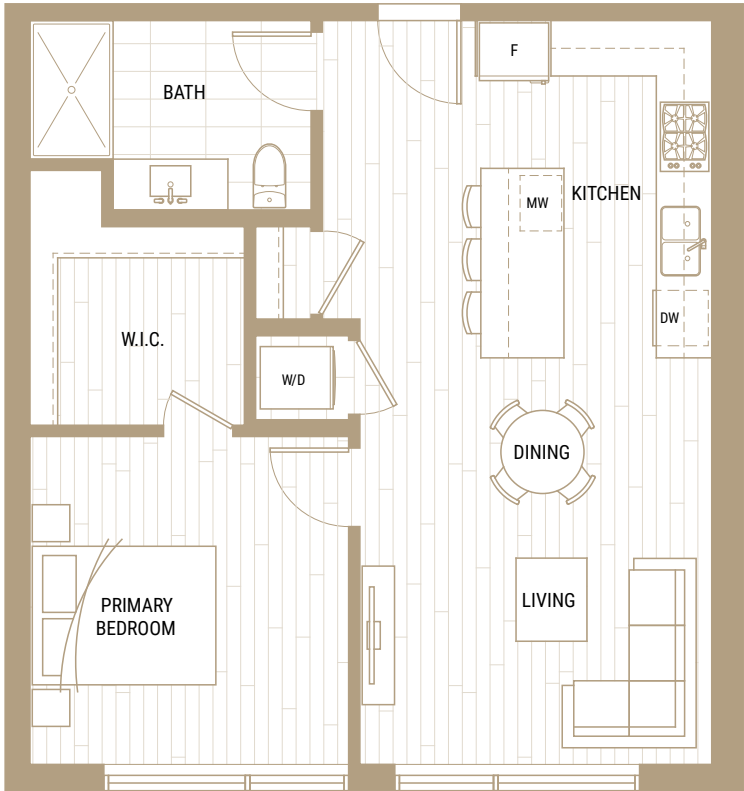
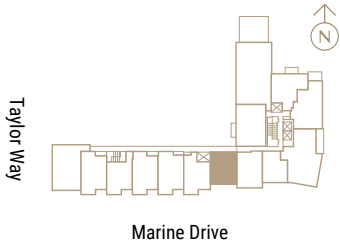
1 BED
1 BATH
650 SF. INTERIOR



Plan H

308, 408, 508, 608

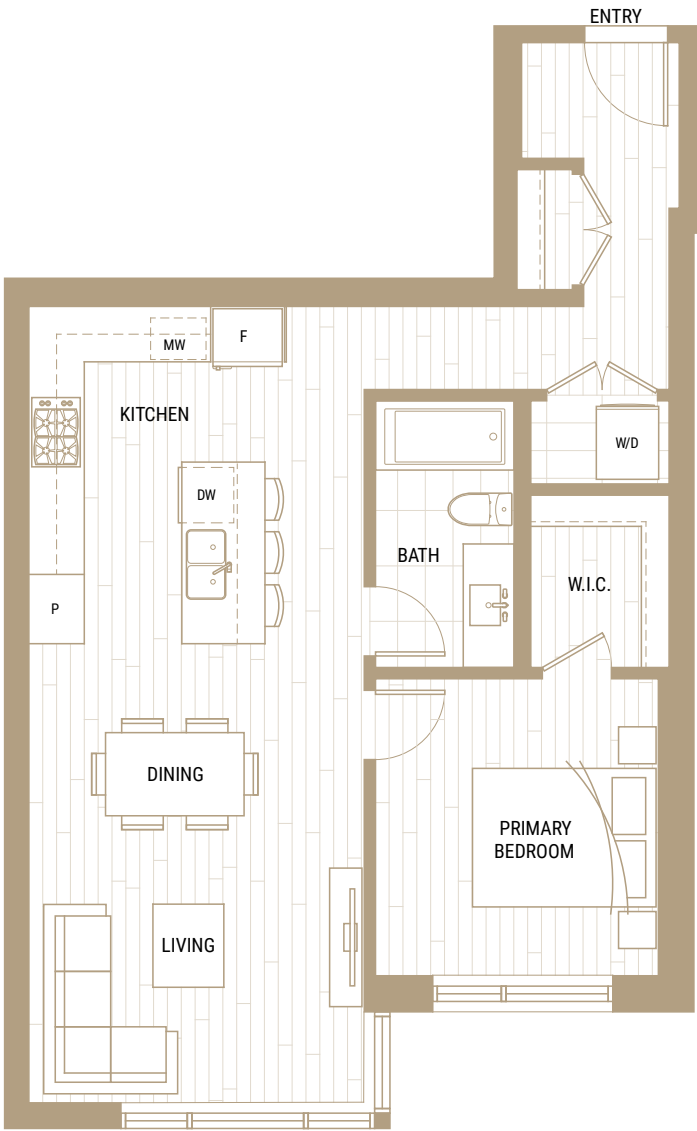
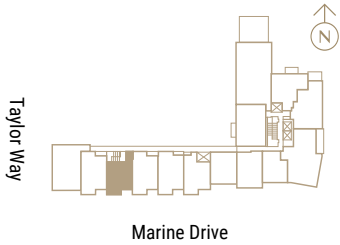
1 BED
1 BATH
756 SF. INTERIOR



Plan L

412, 512

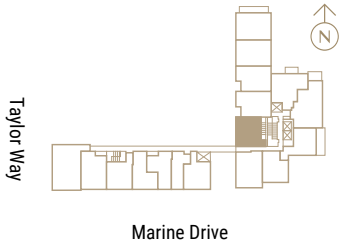
1 BED
1 BATH
762 SF. INTERIOR



Plan P

206

1 BED
1 BATH
695 SF. INTERIOR



2 BEDROOM COLLECTION



EXECUTIVE
ON THE PARK

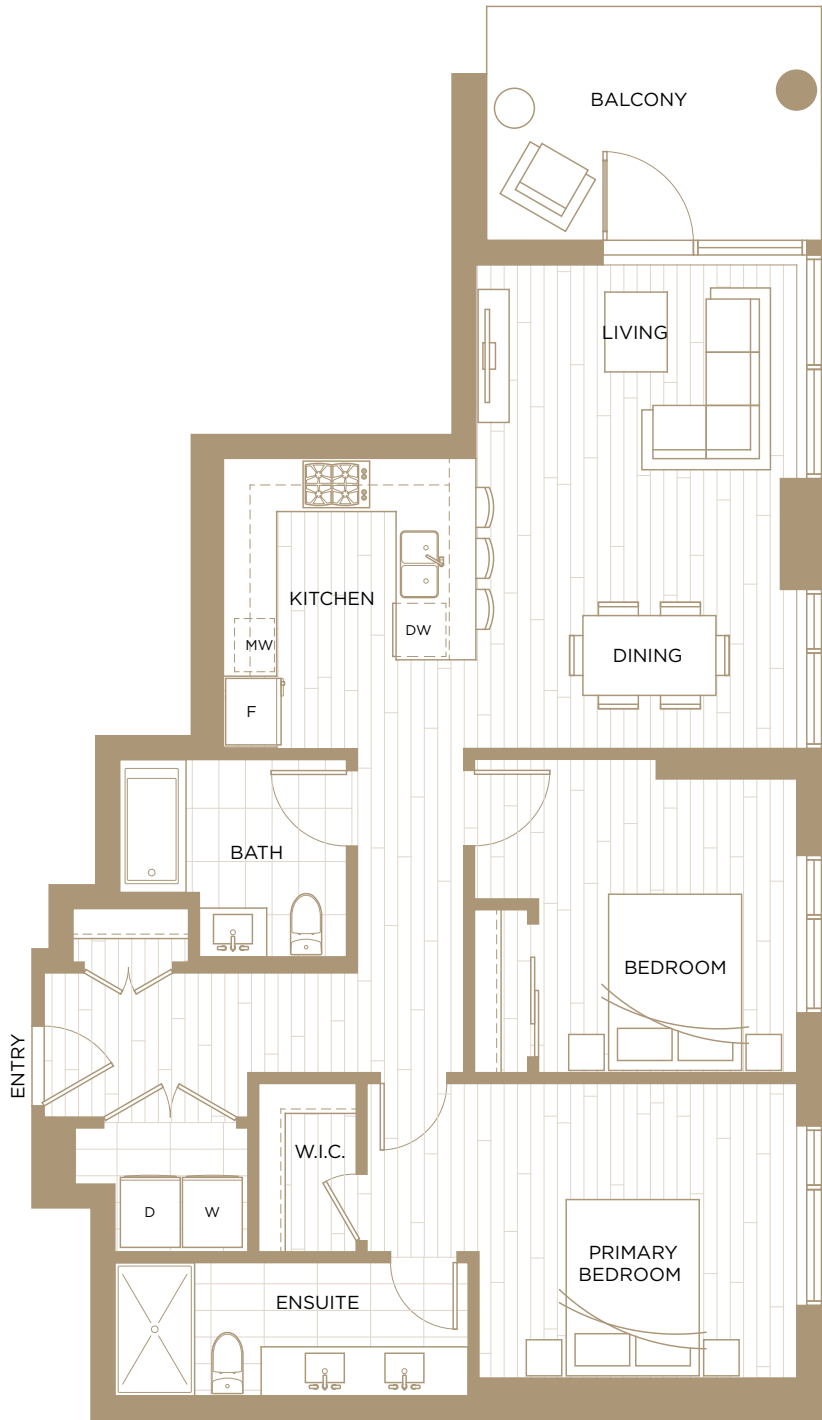
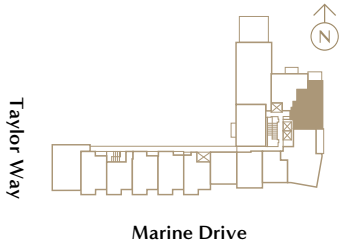
WEST VANCOUVER

Plan D

202, 304, 404, 504, 604,704

2 BED
2 BATH

1,080 SF. INTERIOR
108 SF. EXTERIOR

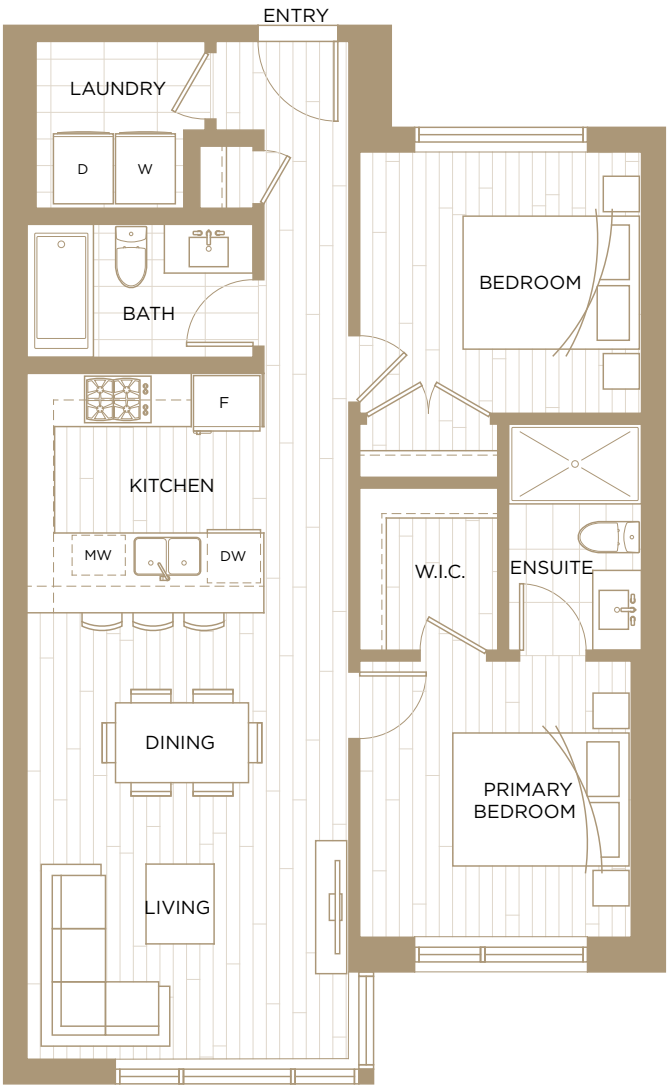
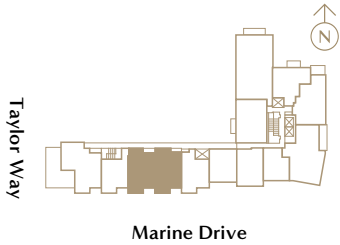


Plan K

410, 411, 510, 511

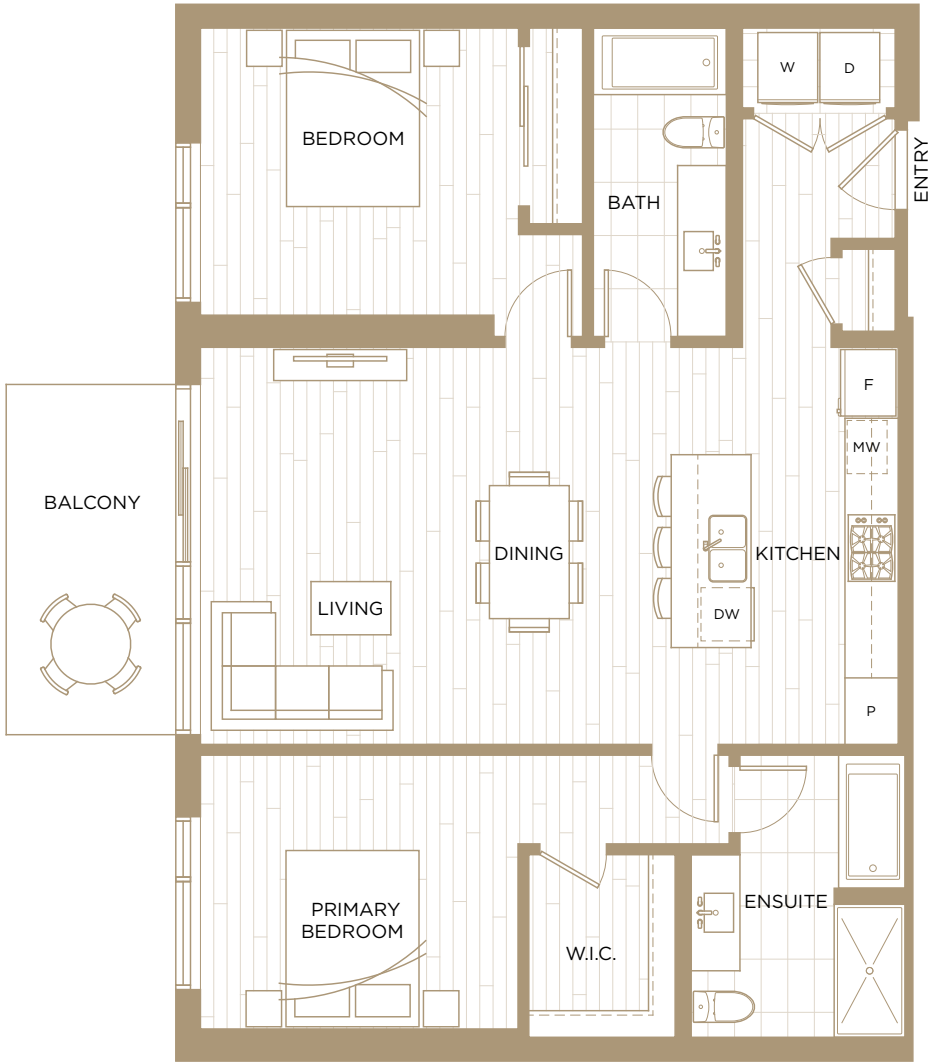
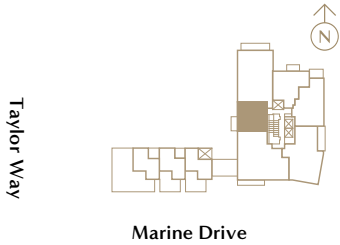
2 BED
2 BATH

888 SF. INTERIOR



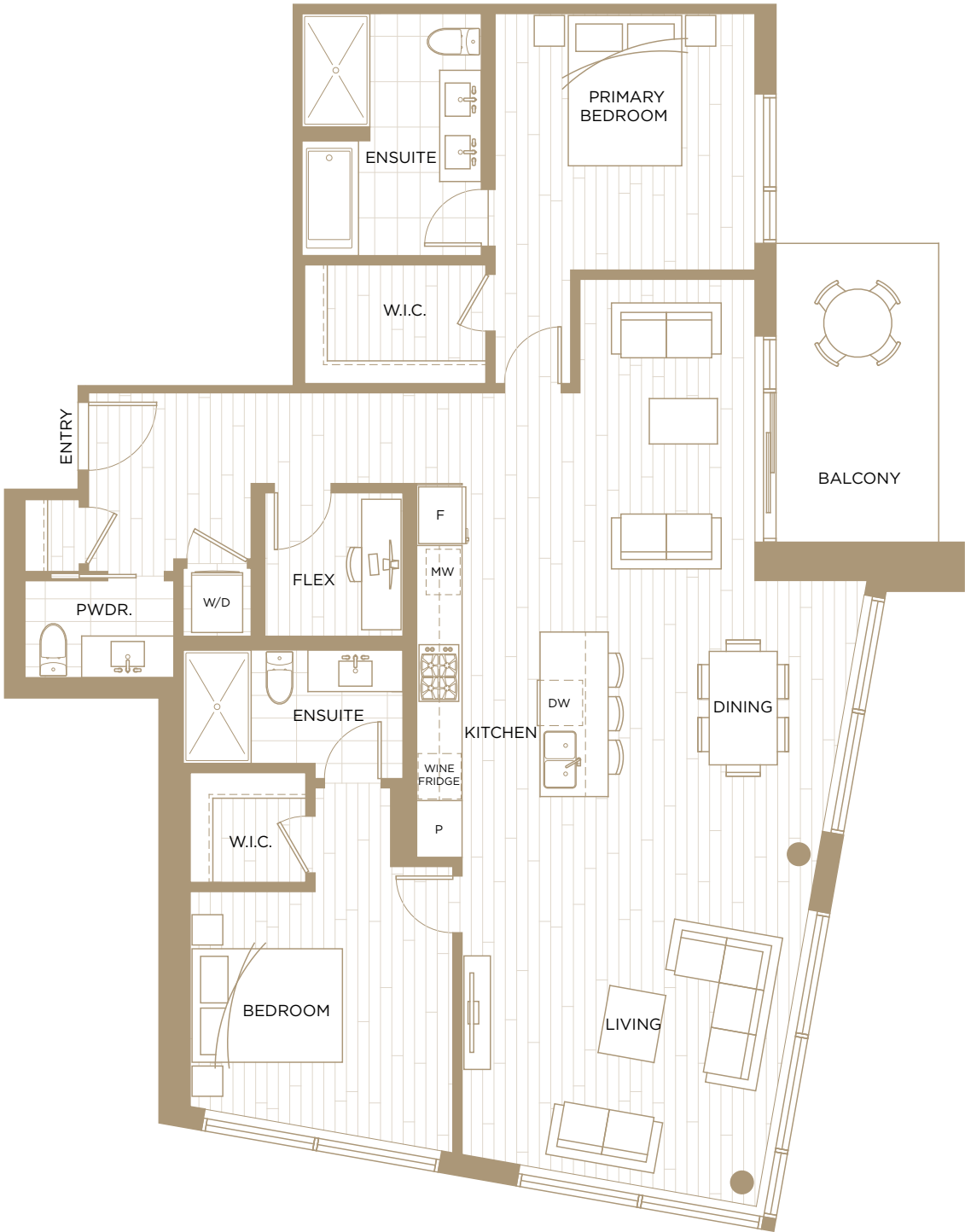
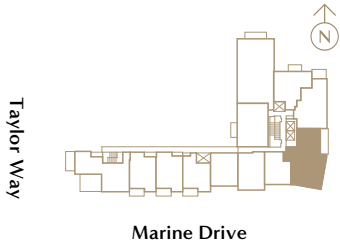
Plan X

701
.....
2 BED
2 BATH
1,101 SF. INTERIOR
84 SF. EXTERIOR



Plan E

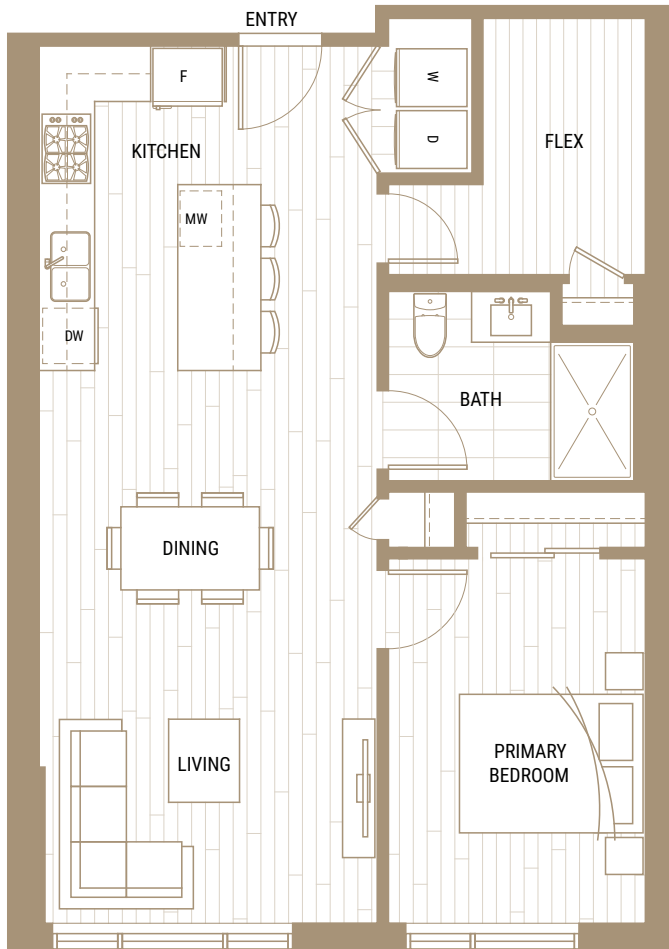
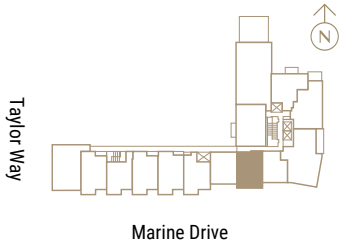
305, 405, 505, 605, 705
.....
2 BED + FLEX
2.5 BATH
1,456 SF. INTERIOR
94 SF. EXTERIOR



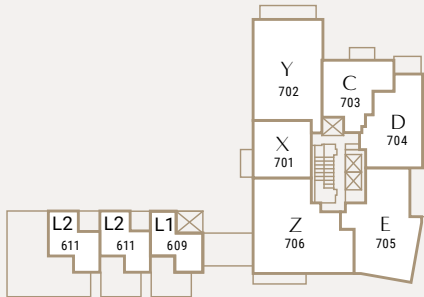
Plan G

205, 307, 407, 507, 607

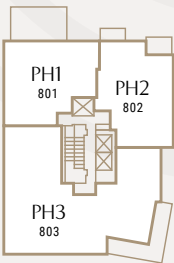
1 BED + FLEX
1 BATH
786 SF. INTERIOR



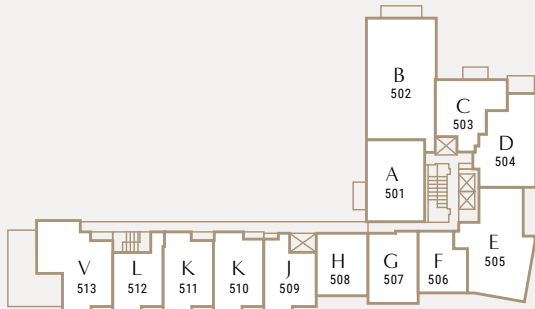
Keyplans



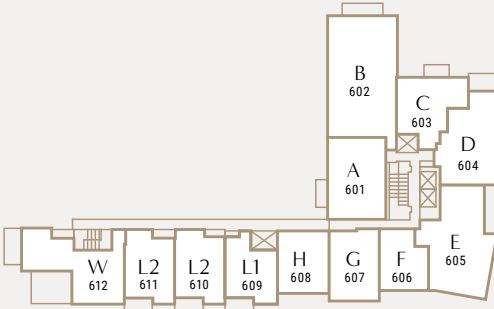
LEVEL 7



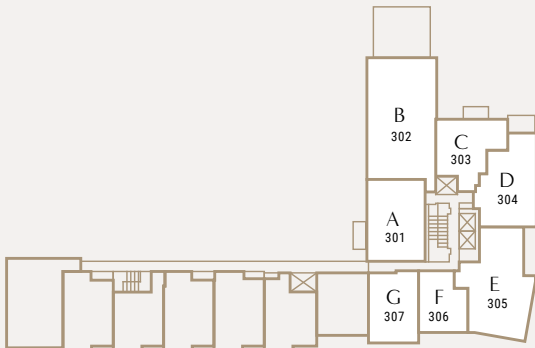
LEVEL 8



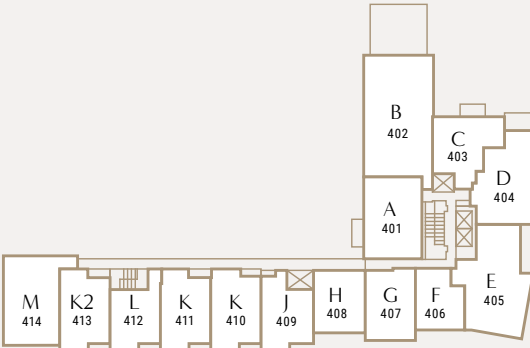
LEVEL 5



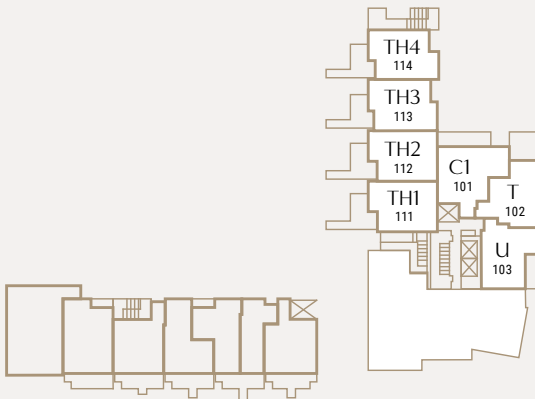
LEVEL 6



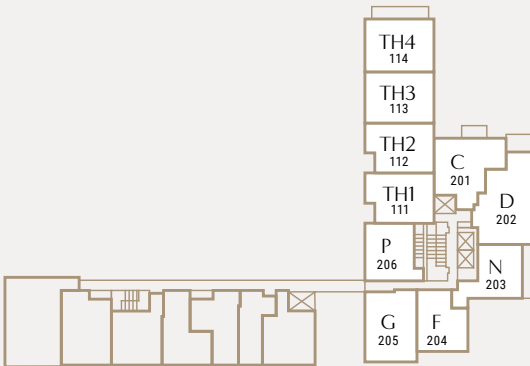
LEVEL 3



LEVEL 4



LEVEL 1



LEVEL 2

3 BEDROOM COLLECTION



EXECUTIVE
ON THE PARK

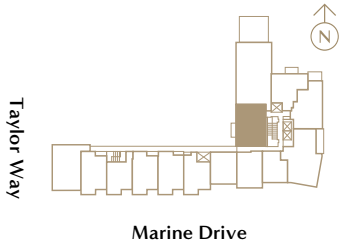
WEST VANCOUVER

Plan A

301, 401, 501, 601

3 BED
3 BATH

1,427 SF. INTERIOR
84 SF. EXTERIOR



Plan B

402, 502

3 BED
2.5 BATH

1,628 SF. INTERIOR
124-617 SF. EXTERIOR



Keyplans

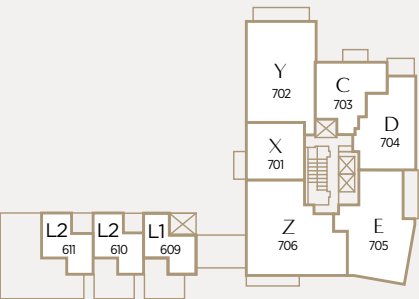




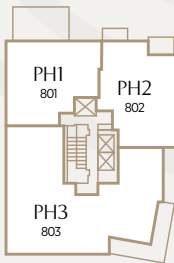
EXECUTIVE

ON THE PARK

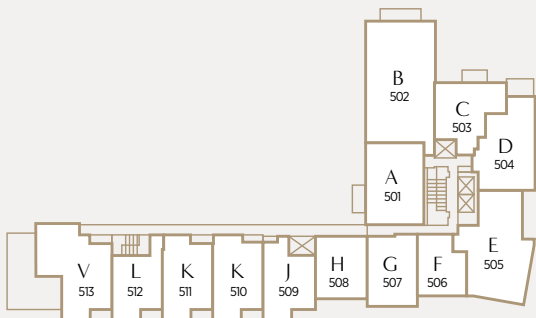
WEST VANCOUVER



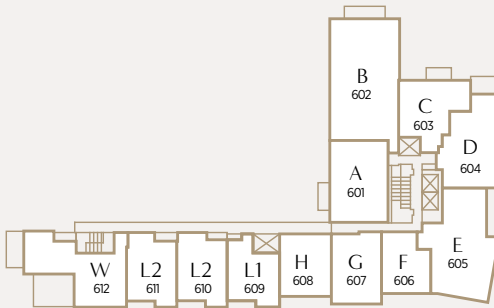
LEVEL 7



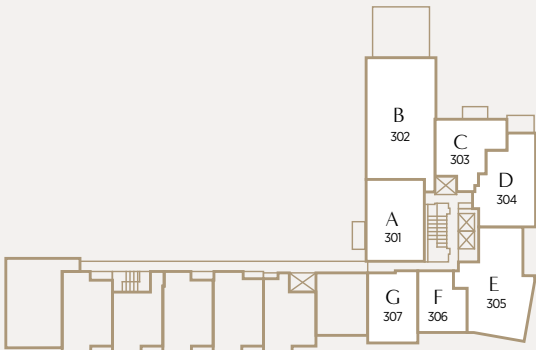
LEVEL 8



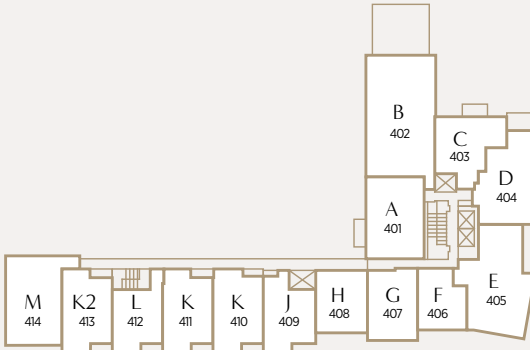
LEVEL 5



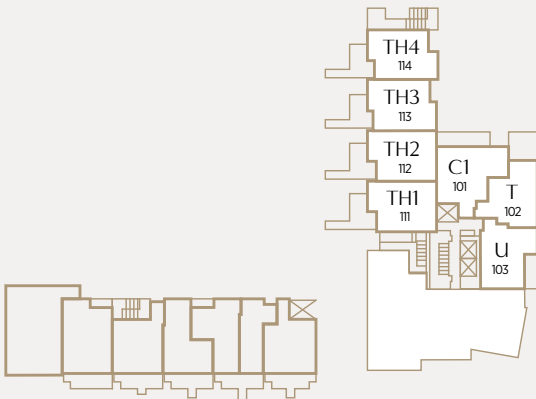
LEVEL 6



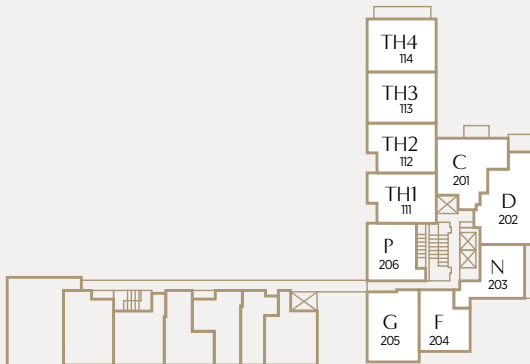
LEVEL 3



LEVEL 4



LEVEL 1



LEVEL 2



HOME STORE
660 Clyde Ave., West Vancouver, BC V7T 1C9

PENTHOUSES COLLECTION



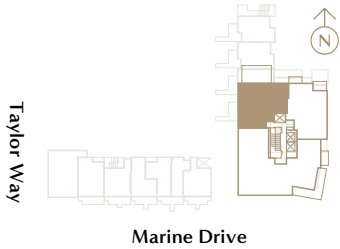
EXECUTIVE
ON THE PARK

WEST VANCOUVER

Plan PH1

801

2 BED + FAMILY + FLEX
2.5 BATH
1,617 SF. INTERIOR
444 SF. EXTERIOR



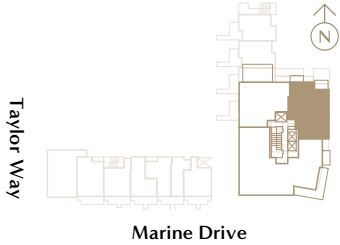
ROTATED FLOOR PLAN



Plan PH2

802

2 BED + FAMILY + FLEX
2.5 BATH
1,628 SF. INTERIOR
106 SF. EXTERIOR



ROTATED FLOOR PLAN



Keyplans

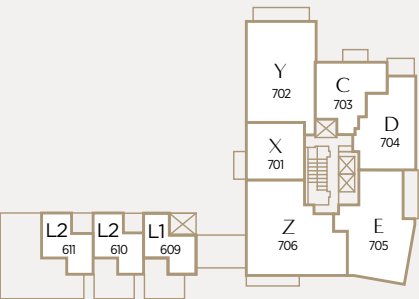




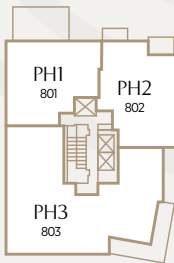
EXECUTIVE

ON THE PARK

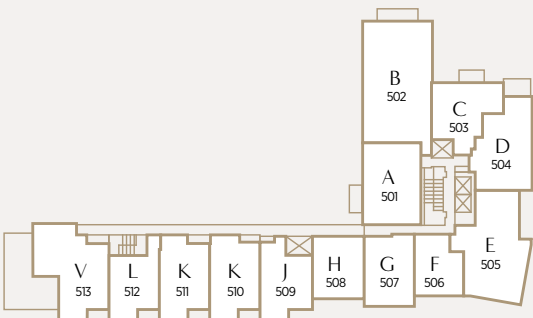
WEST VANCOUVER



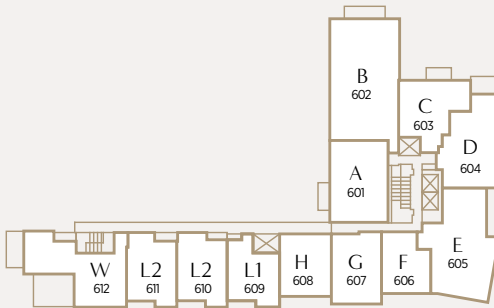
LEVEL 7



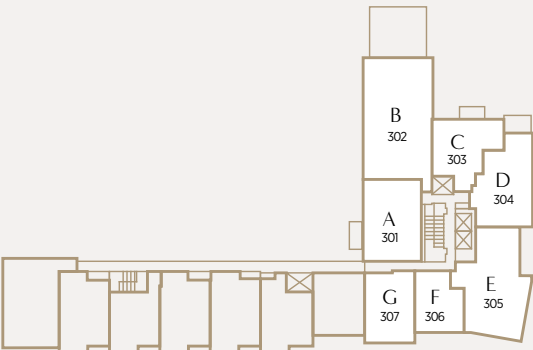
LEVEL 8



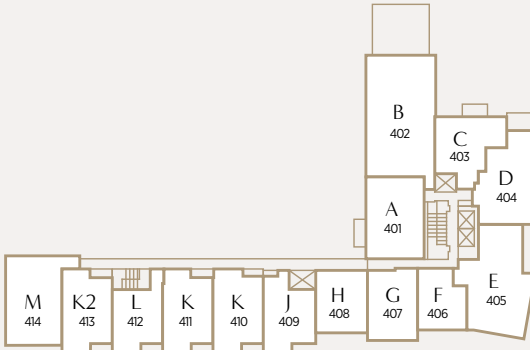
LEVEL 5



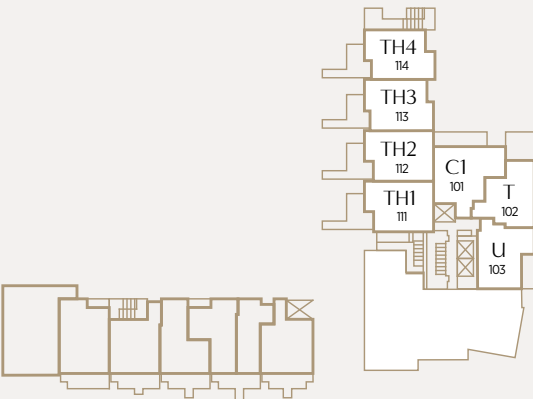
LEVEL 6



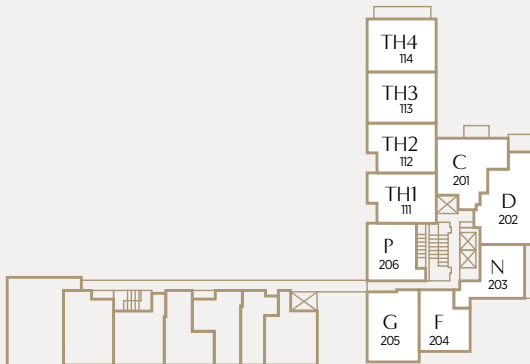
LEVEL 3



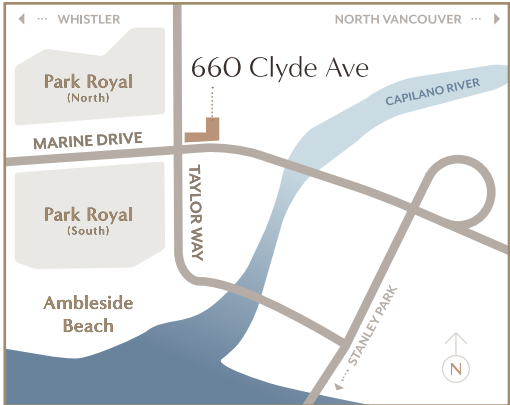
LEVEL 4



LEVEL 1



LEVEL 2



HOME STORE
660 Clyde Ave., West Vancouver, BC V7T 1C9

TOWNHOMES & SKYVILLAS COLLECTION

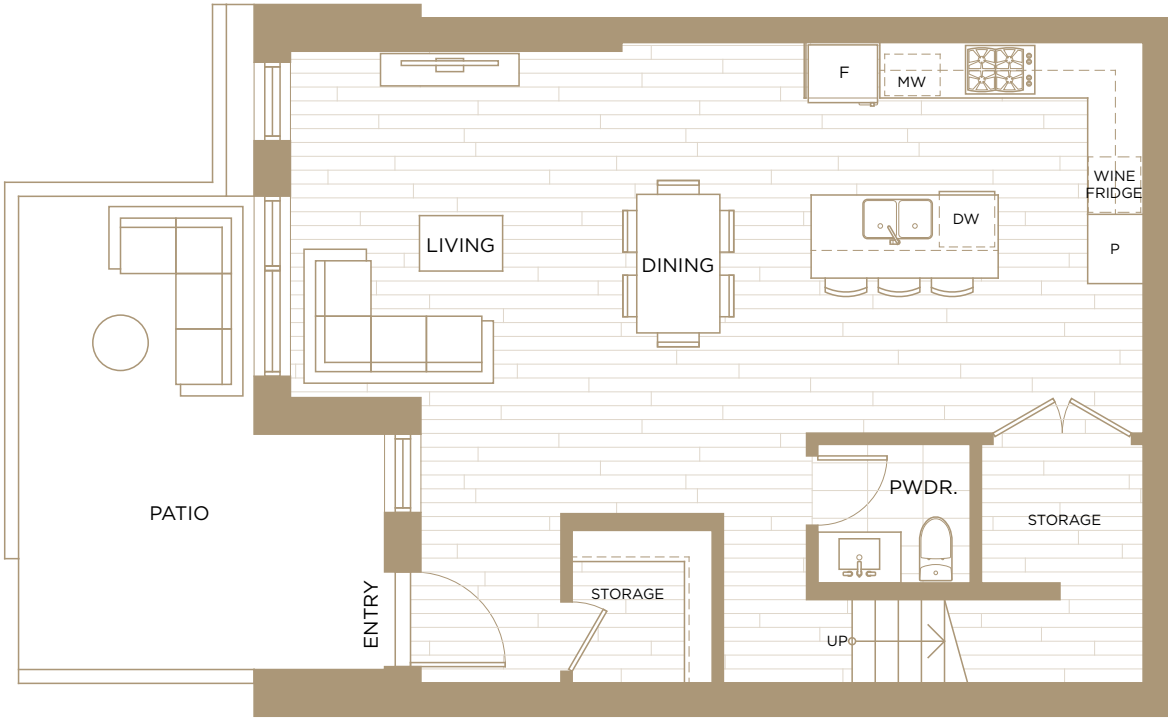


EXECUTIVE
ON THE PARK

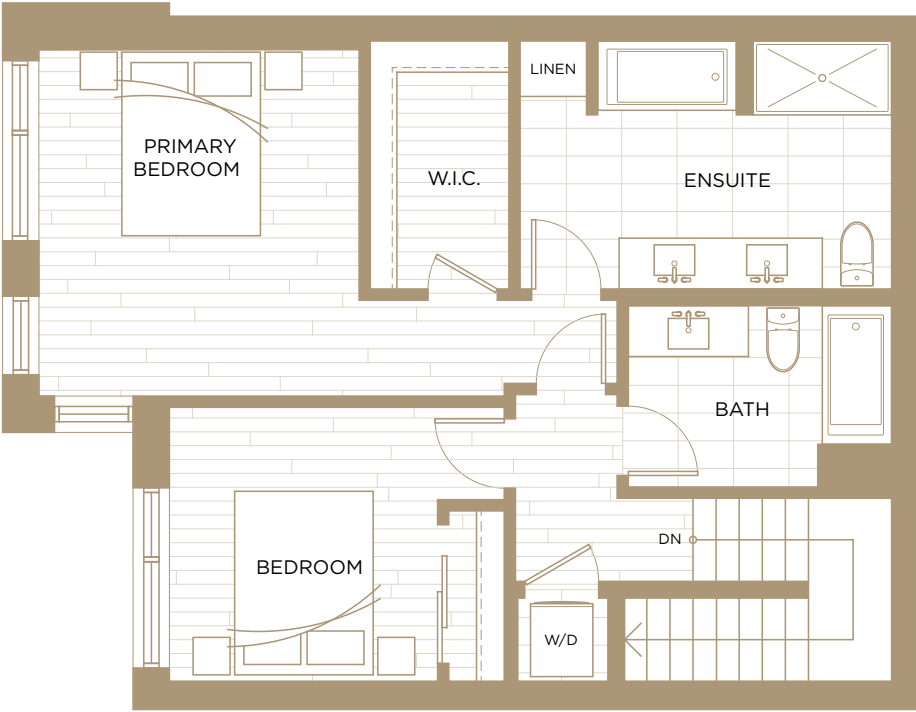
WEST VANCOUVER

Plan TH1

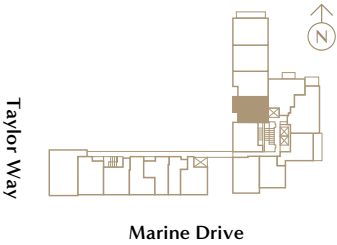
111
.....
2 BED
2.5 BATH
1,507 SF. INTERIOR
186 SF. EXTERIOR



Main Level



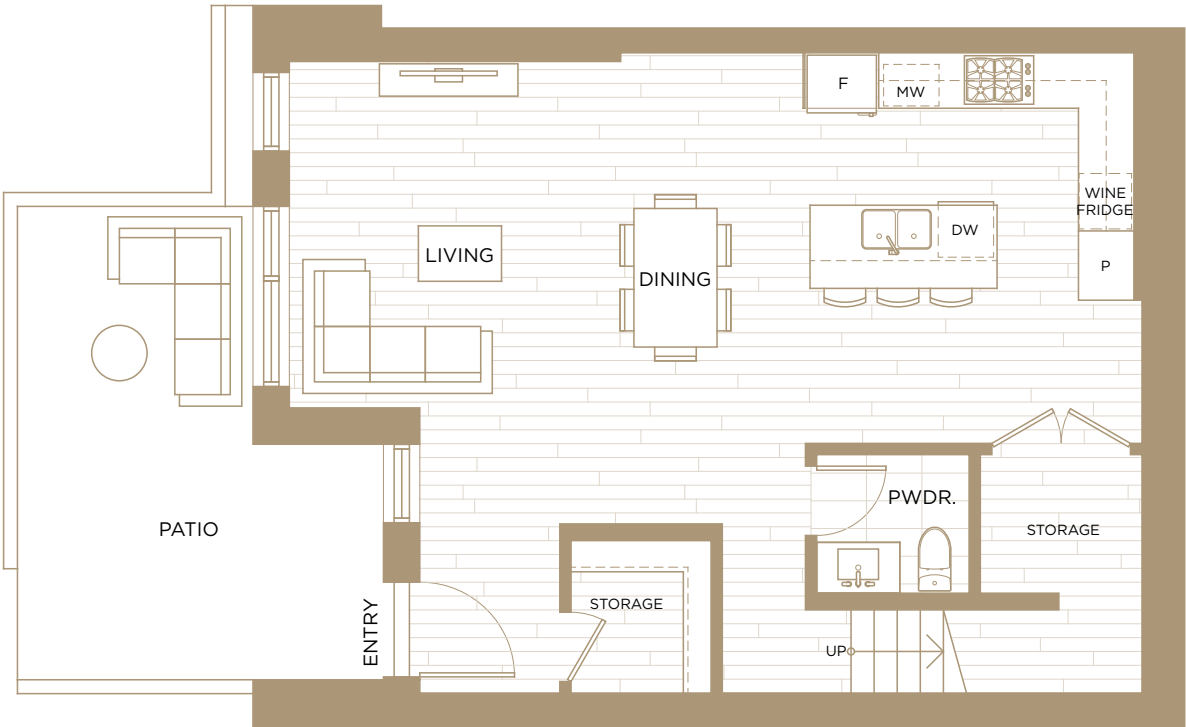
Upper Level



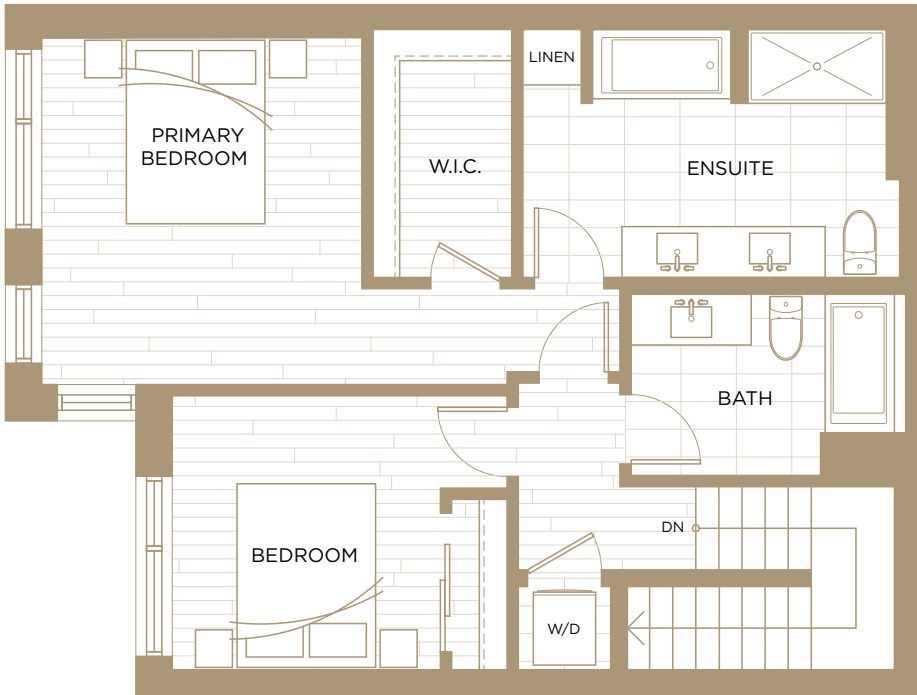
Plan TH2

112

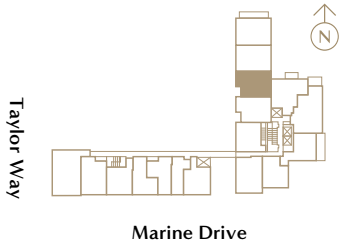
2 BED
2.5 BATH
1,498 SF. INTERIOR
186 SF. EXTERIOR



Main Level



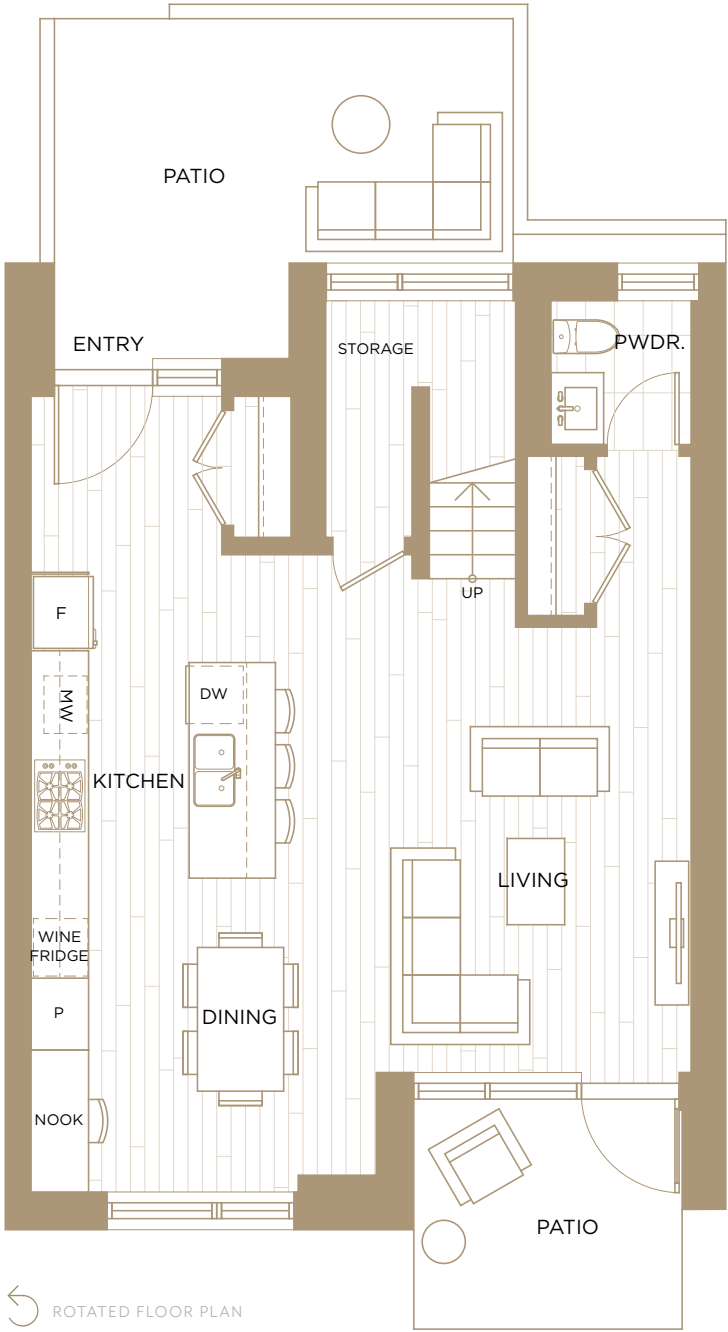
Upper Level



Plan TH3

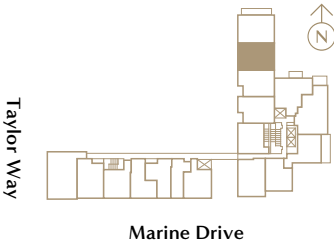
113

3 BED
2.5 BATH
1,549 SF. INTERIOR
239 SF. EXTERIOR

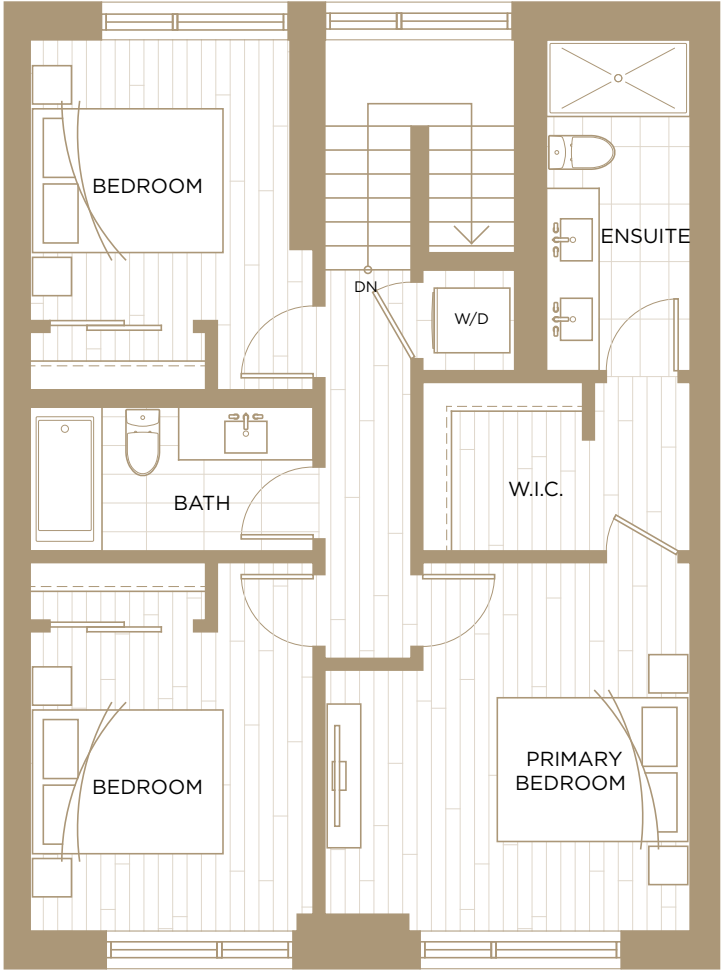


ROTATED FLOOR PLAN

Main Level



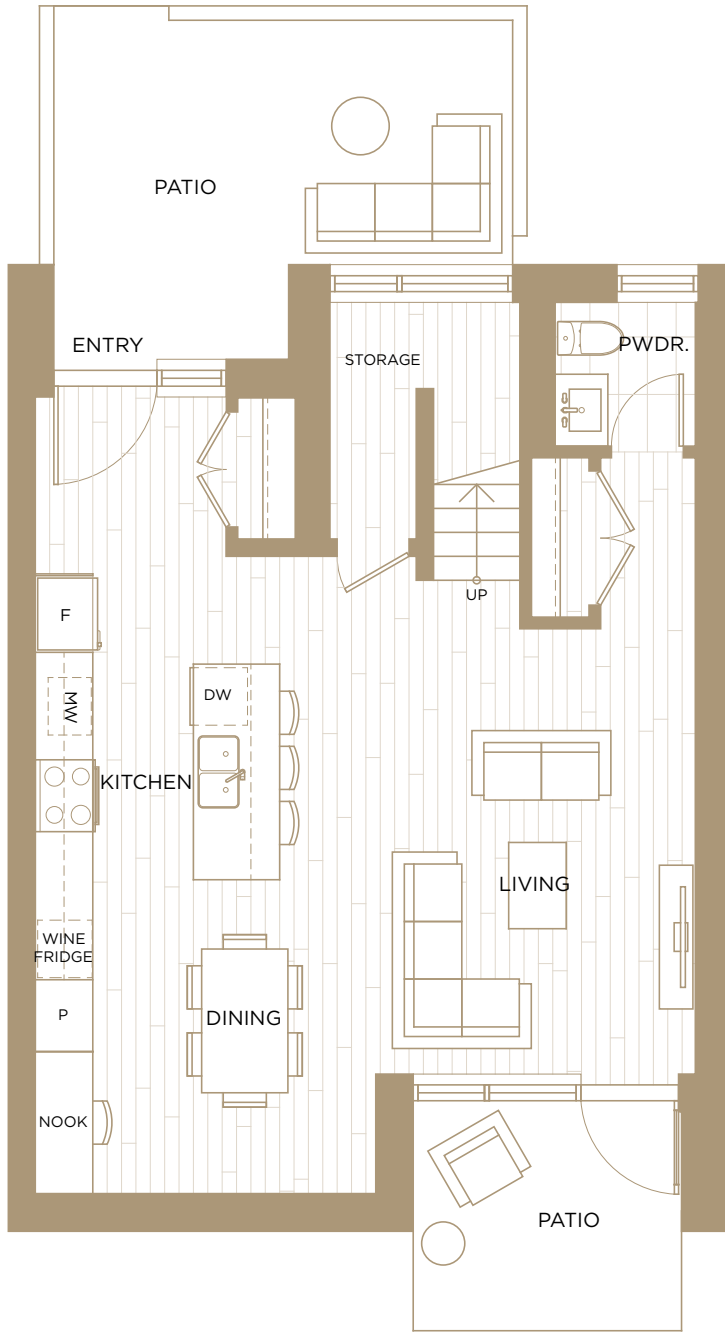
ROTATED FLOOR PLAN



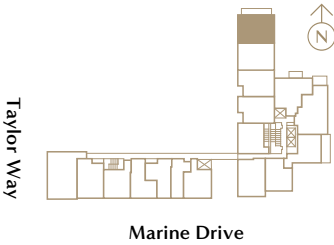
Upper Level

Plan TH4

114
.....
3 BED
2.5 BATH
1,575 SF. INTERIOR
387 SF. EXTERIOR



Main Level



ROTATED FLOOR PLAN



Upper Level

Keyplans

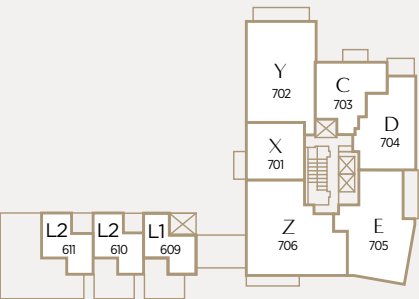




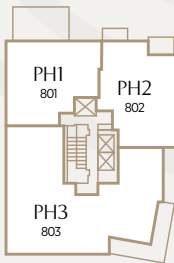
EXECUTIVE

ON THE PARK

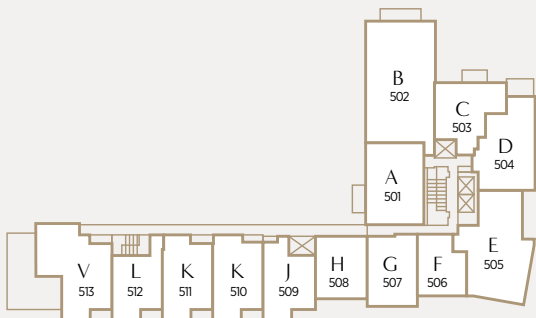
WEST VANCOUVER



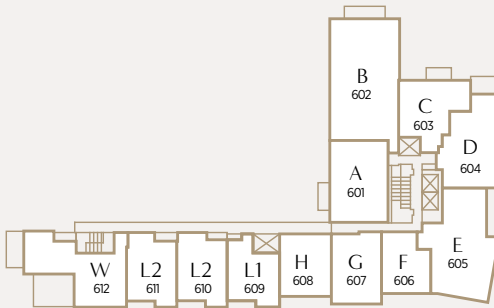
LEVEL 7



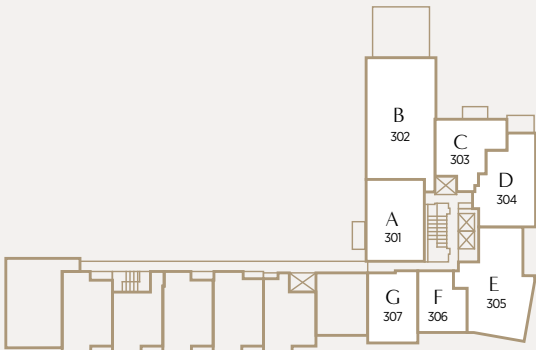
LEVEL 8



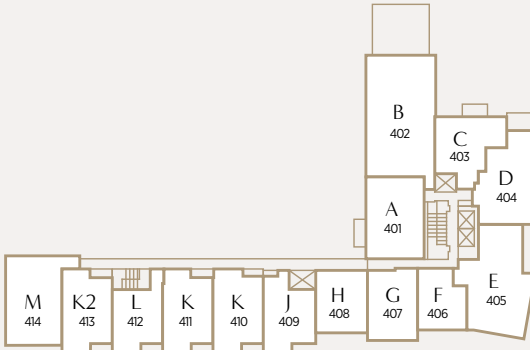
LEVEL 5



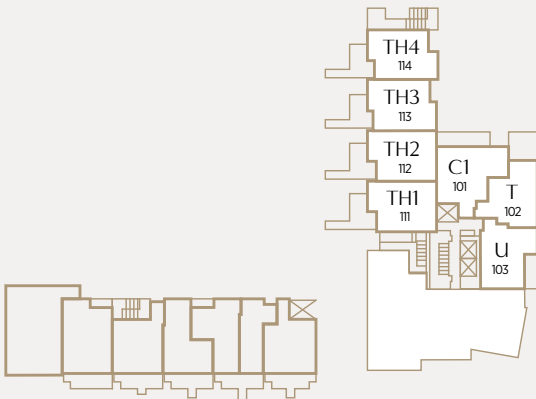
LEVEL 6



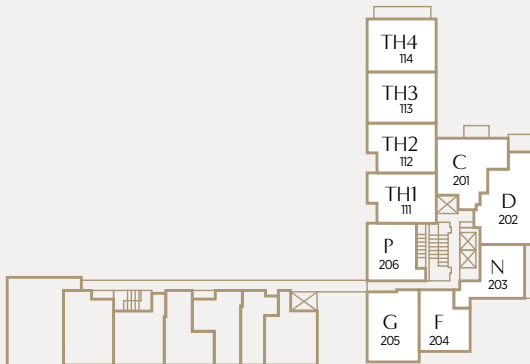
LEVEL 3



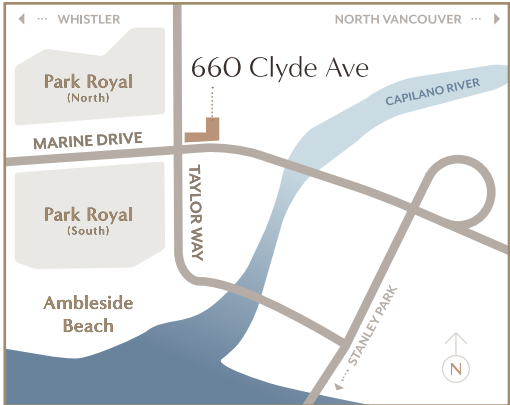
LEVEL 4



LEVEL 1



LEVEL 2



HOME STORE
660 Clyde Ave., West Vancouver, BC V7T 1C9